

# ACOUSTIC ROOMS



ACOUSTIC

# SD GROUP



Silence in every detail, peace and comfort.



SD Acoustic Rooms offer the fastest way to create individual workspaces in open-plan office environments.

Thanks to the SD Acoustic Rooms designed in different sizes, you can hold meetings either individually or in Acoustic Rooms for two or four people.



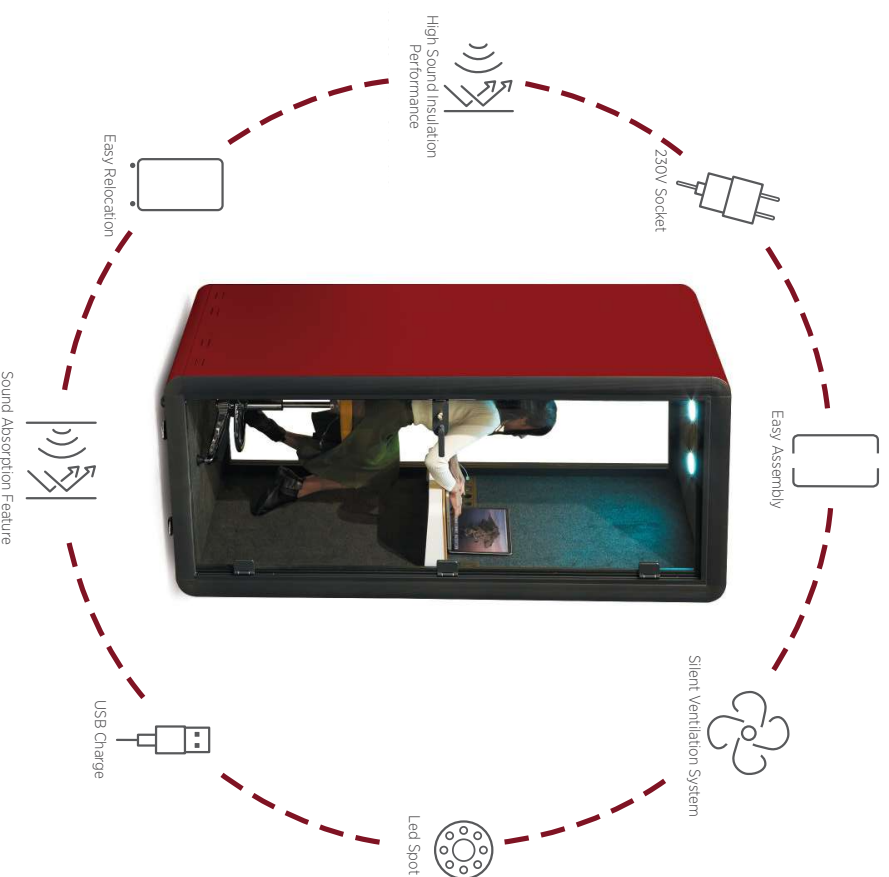
SD Acoustic Rooms adapt to any office environment with different color options and modern designs.



SD Acoustic Rooms create a pleasant atmosphere for meetings with suitable furniture.

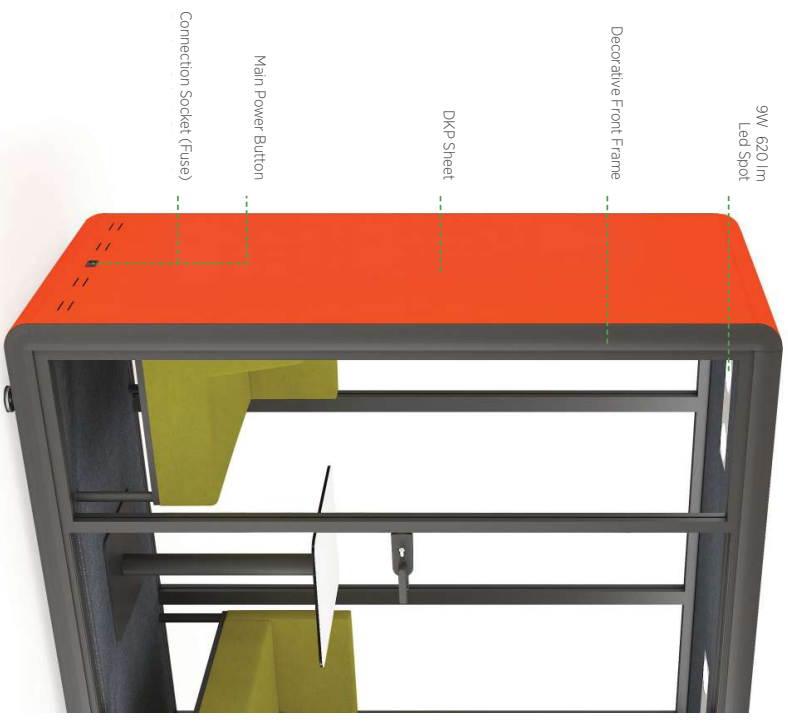
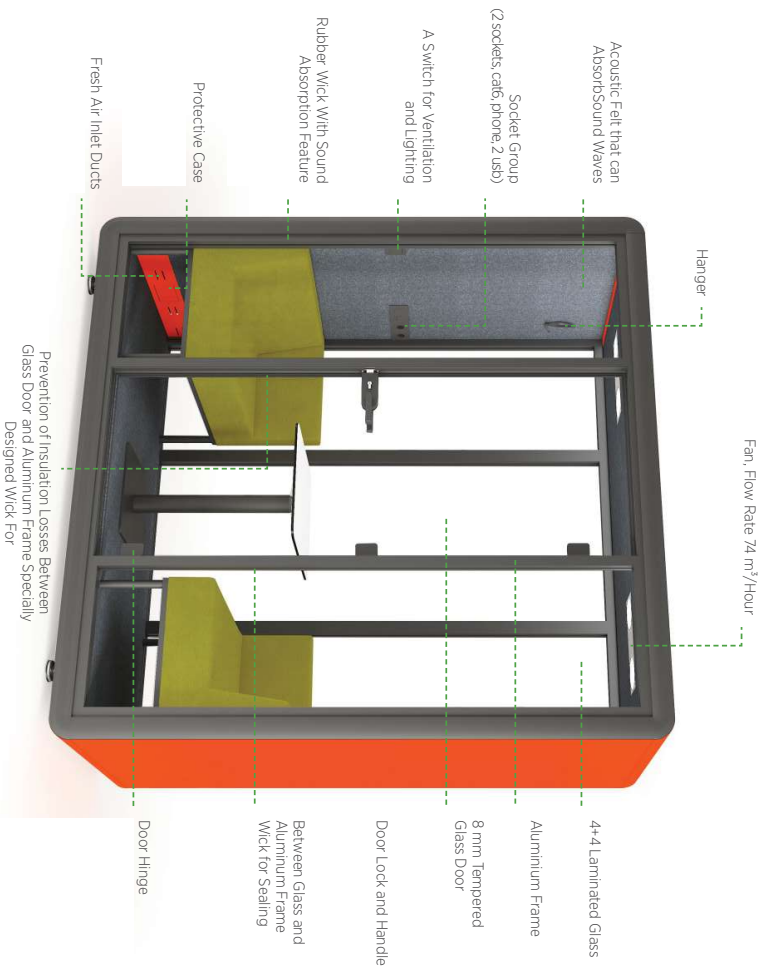


# Soundproof Layers



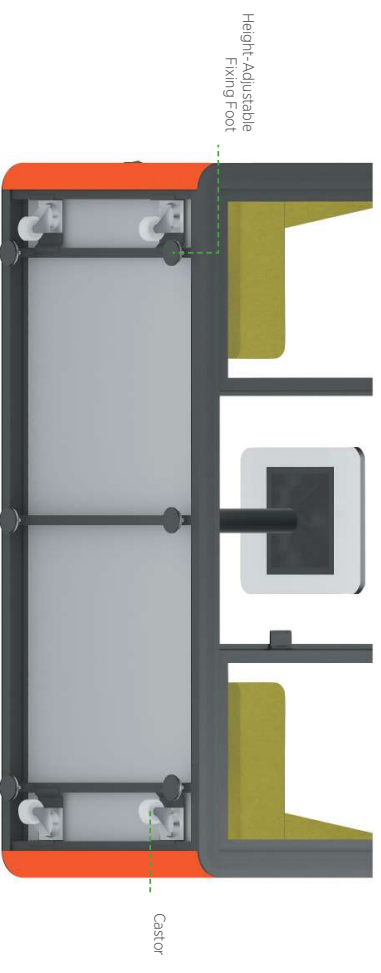
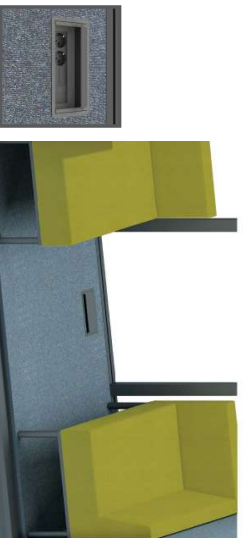
- 1-Sheet Steel**  
High quality powder coated metal side panels.
- 2-Steel Barrier**  
Barriers designed to strengthen the side panels.
- 3-EPDM Sponge**  
It has a very good sound insulation performance.
- 4-Empty Space**  
According to academic studies, it has been concluded that acoustic products made by leaving an air gap between the layers provide the best acoustic performance at all frequencies.
- 5-Wood Panel**  
It is a wooden board with very good mechanical strength.
- 6-Acoustic Foam**  
Absorb sound, echo and vibration, High frequency tones up to 80% and low frequency tones completely.
- 7-Acoustic Felt**  
With its special acoustic fiber structure, it is extremely resistant to impacts, cracks, dismantling and wear. Its rough surface absorbs the sound waves in the acoustic space.
- 8-Decorative Front Frame**  
Decorative front frame made of high-quality electrostatically powder-coated aluminum.
- 9-Protective Cover**  
Thanks to the 30 mA/h leakage current relay in the safety zone, the power supply is automatically interrupted if there is a risk of a leak in the acoustic booth, and safety is guaranteed.
- 10-Air Ducts**  
It allows fresh air from outside to enter the SD Acoustic Room.

# Details



After determining the position of the SD Acoustic Room, it can be fixed with adjustable feet with vibration damping feature. High weight-resistant wheels provide easy displacement.

**Optional**  
If desired, the socket group can be mounted on the floor.



## Exterior Colors



RAL 6018



RAL 1013



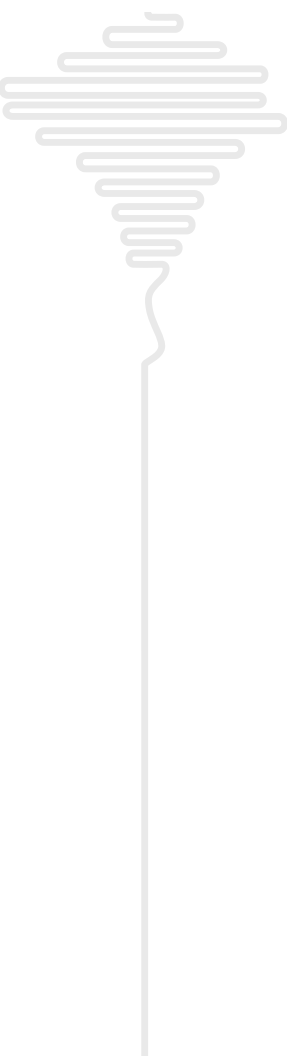
RAL 3003



RAL 7021



RAL 2008



## Upholstery Colors

### Fabric

#### Prime Series



2205



2210



2215



2220



2225



2230



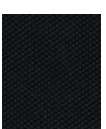
2235



2240



2250



2255

#### Drop Series



1680



1687



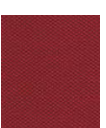
1684



1689



1682



1688



1685



1686

### Leather



1240



1505



6096



1510



1220



6156



6125



6080



6150



6170

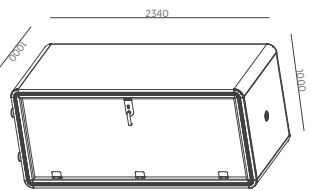


6105

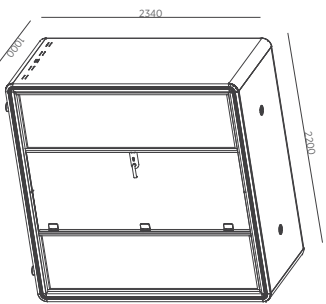
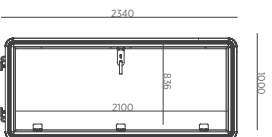


6146

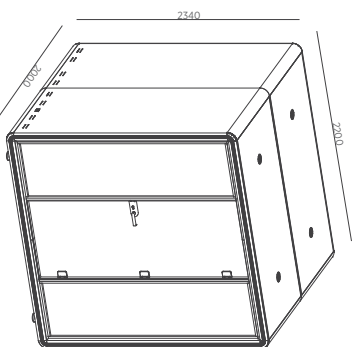
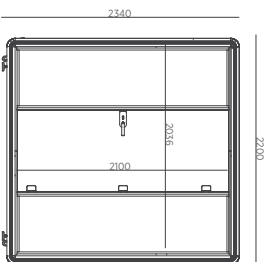
# Dimensions



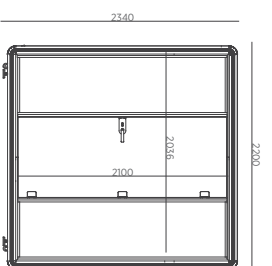
**For 1 Person**  
2x9W 620 lm low electricity consumption led spotlight  
1 fans



**For 2 Persons**  
4x9W 620 lm low electricity consumption led spotlight  
2 fans



**For 4 Persons**  
8x9W 620 lm low electricity consumption led spotlight  
2 fans



# Technical Specifications

	Internal Width(mm)	Depth (mm)	Height(mm)
For 1 Person	1000	1000	2340
For 2 Person	2200	1000	2340
For 4 Person	2200	2000	2340
	Internal Width(mm)	Internal Depth(mm)	Internal Height(mm)
For 1 Person	836	852	2100
For 2 Person	2036	852	2100
For 4 Person	2036	1824	2100

## Struktur

Lacquered side panels made of reinforced sheet metal, coated with high quality electrostatic powder. Electrostatically powder-coated aluminum profile acoustic cabin frame 80 mm wide 4 + 4 laminated glass with aluminum frames at the front and rear. Glass 600x 8mm hardened impact resistant. Lower and upper frame reinforced with steel profiles. Weight-resistant lower wheels make it easier to move the acoustic cabin. The inner surfaces of the cabins are covered with acoustic felts, extremely resistant to impacts, cracks, sound absorption is ideal.

## Electrical System I

3 m long with plug so that the system can be easily connected to the office electrical system. Main switch and AC power input socket with fuse 30 mA/h leakage current relay which automatically cuts the electricity to the acoustic cabinet in the event of an electrical leak and prevents possible dangers. 2x9W 620 lm low electricity consumption led spotlight for single room. 4x9W 620 lm low electricity consumption led spotlight for double room. 8x9W 620 lm low electricity consumption led spotlight for quadruple room. 2 sockets, 1 cat6 socket, 1 telephone socket, 2 USB port and 1 switch for lighting and ventilation system.

## Ventilation System

Quiet fan with an air flow rate of 74 m<sup>3</sup>/hour. 1 fan in the cabin for one person. 2 fans in the double cabin. 2 fans in the four-compartment cabin. The fans are activated by the switch.

## Sound Insulation

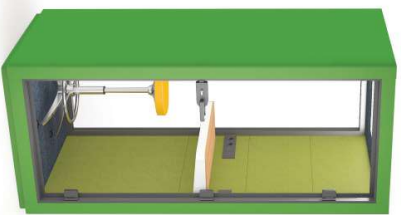
During the measurements of the National Metrology Institute TÜBİTAK according to ISO 23531-1, the speech attenuation value was measured with 32 dB and the D<sub>S,A</sub> value with 20,8 dB at a frequency of 8000 Hz.

# WD GROUP





For those who prefer silence.

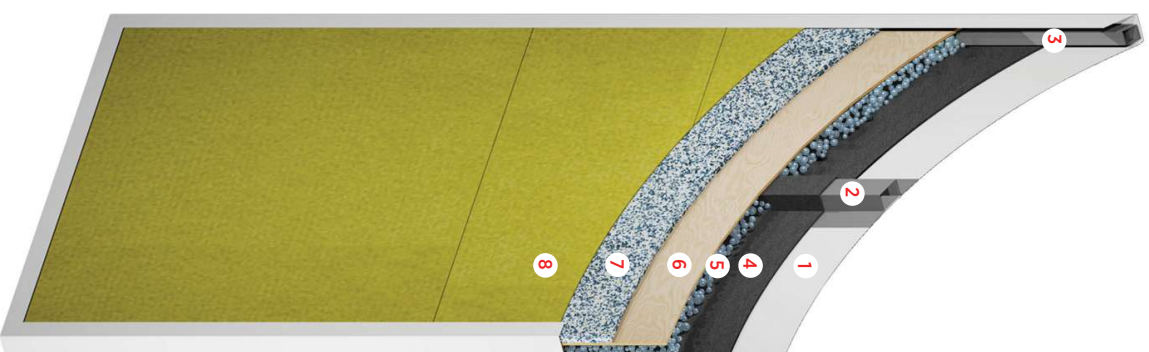


When the focus is reached, ideas come true and applied. Our silent and mobile cabins, meeting room, it is designed to meet private office or quiet workspace needs.



WD Acoustic Rooms help you create quiet spaces.

# Soundproof Layers



**1-Sheet Steel**  
High quality powder coated metal side panels.

**2-Steel Barrier**  
Barriers designed to strengthen the side panels.

**3-Steel Skeleton**  
Steel inner skeleton designed to strengthen the body.

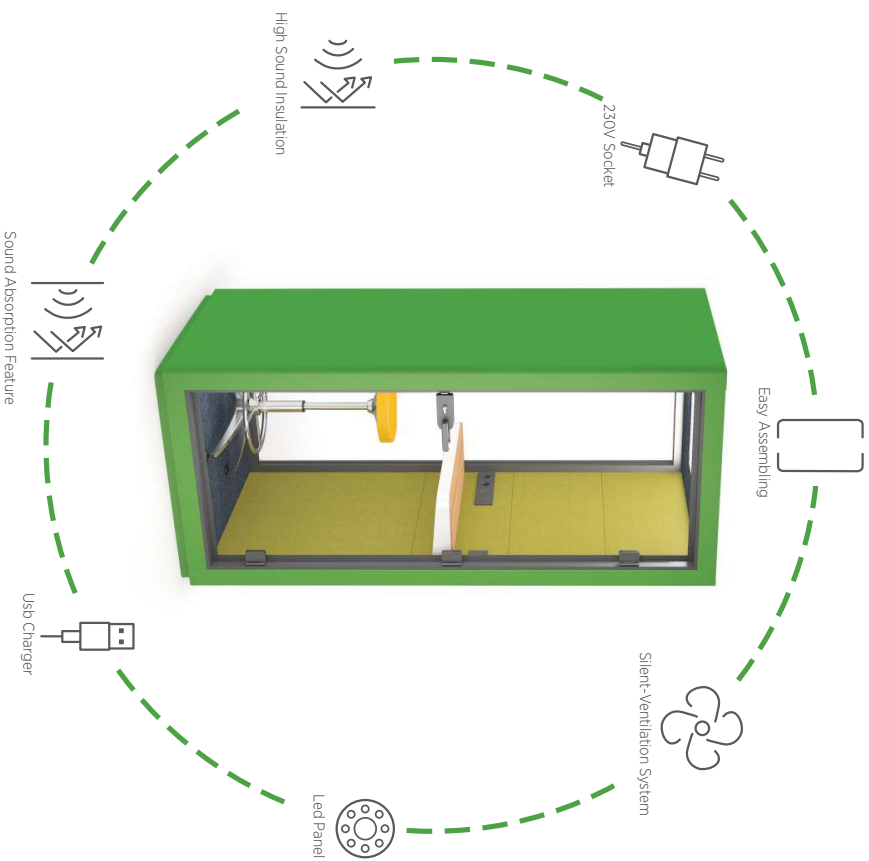
**4-EPDM Sponge**  
It has a very good sound insulation performance.

**5-Empty Space**  
According to academic studies, it has been concluded that acoustic products made by leaving an air gap between the layers provide the best acoustic performance at all frequencies.

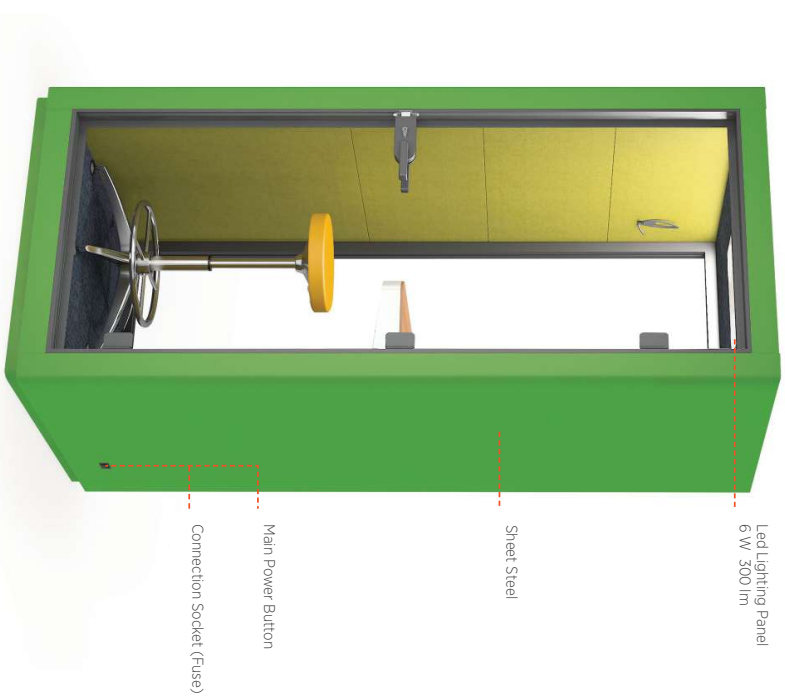
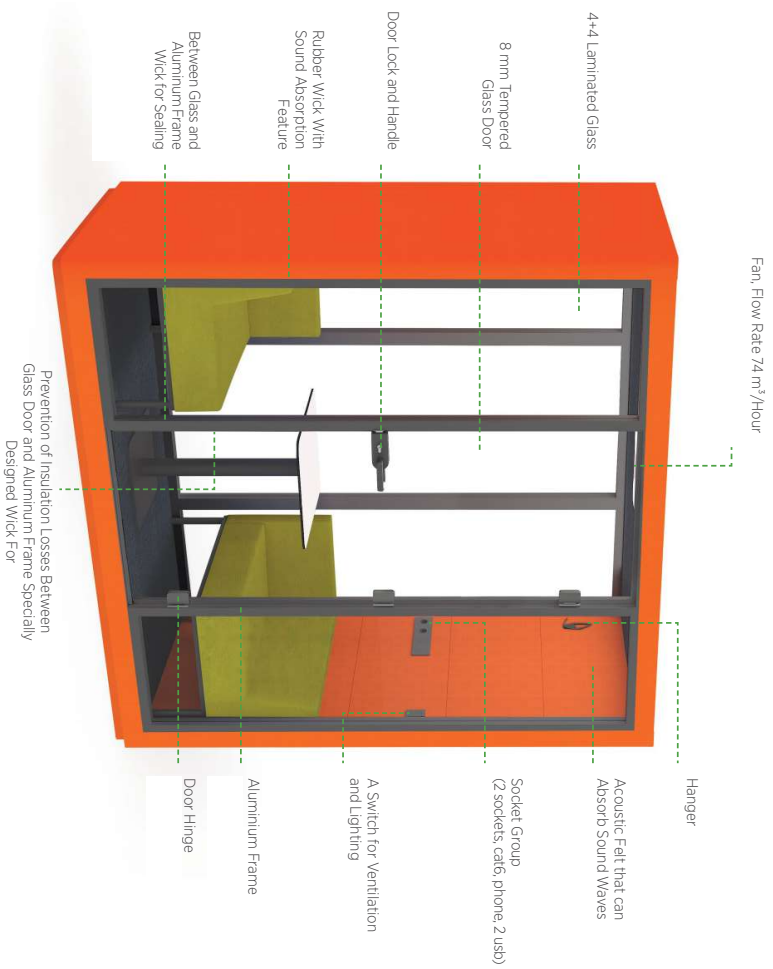
**6-Wood Panel**  
It is a wooden board with very good mechanical strength.

**7-Acoustic Foam**  
Absorb sound, echo and vibration. High frequency tones up to 80% and low frequency tones completely.

**8-Acoustic Fabric**  
With its special acoustic fiber structure, it is extremely resistant to impacts, cracks, dismantling and wear. Its rough surface absorbs the sound waves in the acoustic space.

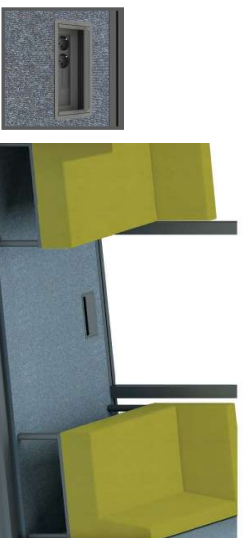


# Details



## Optional

If desired, the socket group can be mounted on the floor.



## Exterior Colors



RAL 6018



RAL 1013



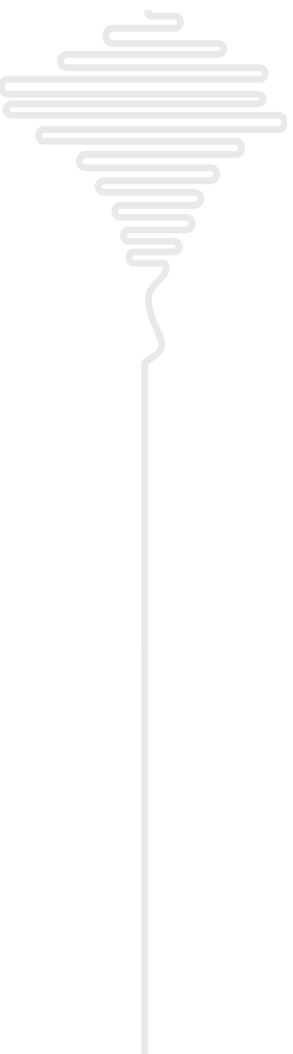
RAL 3003



RAL 7021



RAL 2008



## Upholstery Colors

### Fabric

#### Prime Series



2205



2210



2215



2220



2225



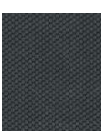
2230



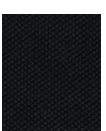
2235



2240



2250



2255

#### Drop Series



1680



1687



1684



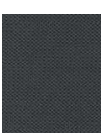
1689



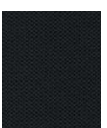
1682



1688



1685



1686

### Leather



1240



1505



6096



1510



1220



6136



6125



6080



6150



6170

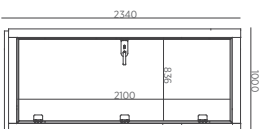
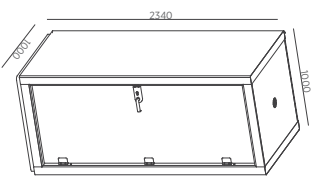


6105

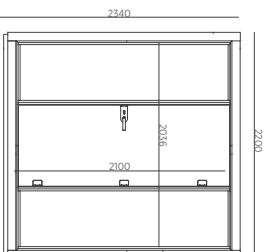
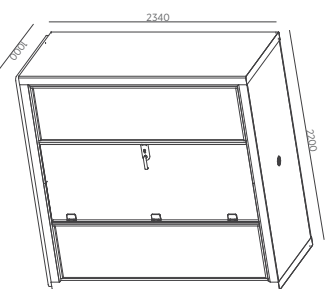


6146

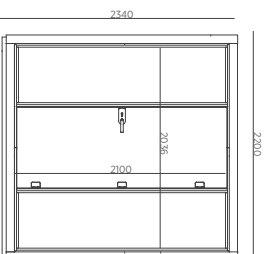
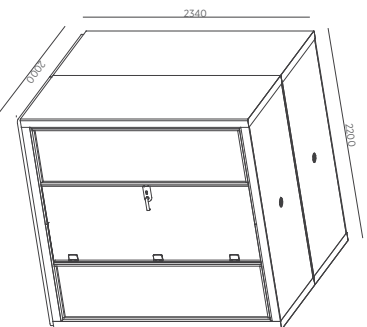
# Dimensions



**For 1 Person**  
2x6W, 300 lm low electricity consumption  
led lighting panel  
1 fans



**For 2 Persons**  
2x6W, 300 lm low electricity consumption  
led lighting panel  
1 fans



**For 4 Persons**  
4x6W, 300 lm low electricity consumption  
led lighting panel  
2 fans

26 | WD Acoustic Rooms

# Technical Specifications

	Internal Width(mm)	Depth (mm)	Height(mm)
<b>For 1 Person</b>	1000	1000	2340
<b>For 2 Person</b>	2200	1000	2340
<b>For 4 Person</b>	2200	2000	2340

	Internal Width(mm)	Internal Depth(mm)	Internal Height(mm)
<b>For 1 Person</b>	836	875	2100
<b>For 2 Person</b>	2036	875	2100
<b>For 4 Person</b>	2036	1875	2100

## Struktur

Lacquered side panels made of reinforced sheet metal, coated with high quality electrostatic powder  
4+4 laminated glass with aluminum frames at the front and rear  
Glass door 8 mm hardened impact resistant  
Lower and upper frame reinforced with steel profiles  
WD Acoustic Room inner side surfaces are covered with a acoustic fabric that is extremely resistant to impacts and tears, with sound absorption feature  
WD Acoustic room inner floor and ceiling surfaces are covered with acoustic felt, which is extremely resistant to impacts and tears, with sound absorption feature

## Electrical System

3 m long with plug so that the system can be easily connected to the office electrical system  
Main switch and AC power input socket with fuse  
2x6W 300 lm low electricity consumption led lighting panel for single room  
4x6W 300 lm low electricity consumption led lighting panel for double room  
4x6W 300 lm low electricity consumption led lighting panel for quadruple room  
2 sockets, 1 cat6 socket, 1 telephone socket, 2 USB port and 1 switch for lighting and ventilation system

## Ventilation System

Quiet fan with an air flow rate of 74 m<sup>3</sup>/hour  
1 fan in the cabin for one person  
1 fans in the double cabin  
2 fans in the four-compartment cabin  
The fans are activated by the switch